

**BRAZILIAN
BLOWOUT
FREE
INSTRUCTIONS**

BRAZILIAN BLOWOUT FREE™

Congratulations on your purchase of **Brazilian Blowout FREE** —the world's first **patent pending** smoothing treatment **formulated without formaldehyde.**

Now you can confidently offer your clients a smoothing treatment clinically shown to deliver long-lasting frizz-free results—without unwanted ingredients.



**ALL 5
PRODUCTS
Required For
Treatment**

TOOLS



COLOR BOWL



NITRILE GLOVES



CAPE



BLOW DRYER



ROUND BRUSH



HAIR CLIPS



MEASURING
CUP



APPLICATOR
BRUSH



COLOR
WHISK



FLAT IRON THAT
REACHES 450°F



CARBON FIBER
FINE TOOTH COMB

For best results, first assess the client's hair type and condition (see guide below). Follow the appropriate treatment instructions. Perform the treatment 2 weeks before or after color services.*

*Direct dyes and root touch ups only may be applied the same day after the treatment.

COARSE/HEALTHIER HAIR

Instructions: Pages 2-5



INCLUDES: Non-compromised, single process, virgin, resistant, curly and/or frizzy, minimal to moderate highlights.

FRAGILE/COMPROMISED HAIR*

Instructions: Pages 7-10



INCLUDES: Double-processed, heavily highlighted, balayage, fine/thin, dry, curly/wavy, frizzy, weaker hair.

*If the client's hair is too weak for another bleaching or highlighting process, we do not recommend performing this treatment. Once the hair is stronger and can withstand a lightening service, proceed with the Fragile/Compromised instructions.

COARSE/HEALTHIER HAIR INSTRUCTIONS



INCLUDES: Non-compromised, single process, virgin, resistant, curly and/or frizzy, minimal to moderate highlights.

1 CLEANSE & PREP

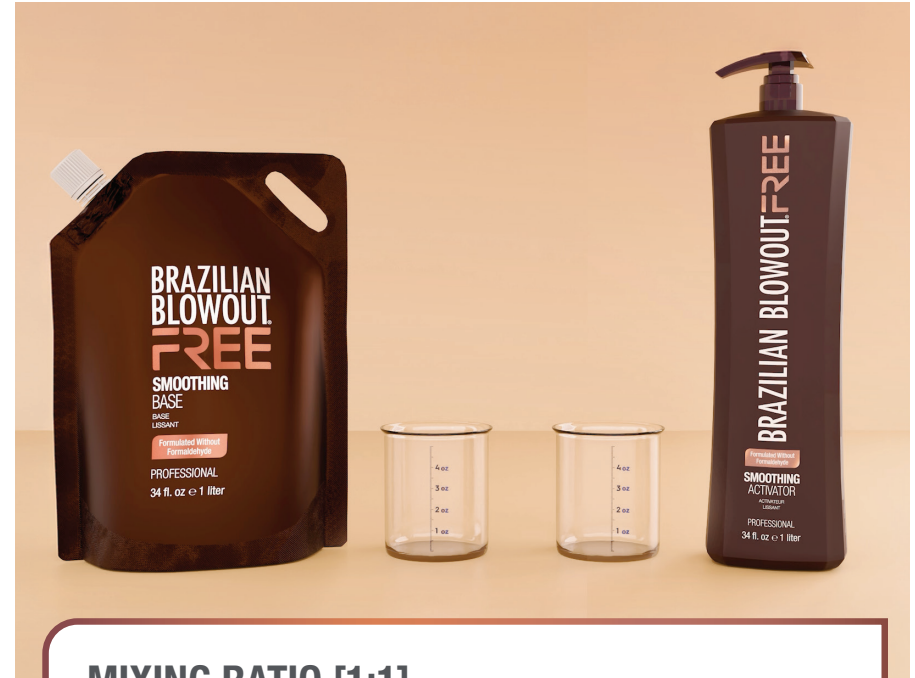


Spray **Micro Chelating Cleanser** generously on soaking wet hair & scalp. Massage until foamy. Rinse thoroughly. Repeat if necessary.

TOWEL DRY hair to 50% dry. Then divide hair into 4 sections. Thoroughly brush hair before application.



2 MEASURE & MIX



MIXING RATIO [1:1]

50% Smoothing Base + 50% Smoothing Activator

MEASURE:

**SHORT
HAIR**
2 - 3 oz.
(60-90ml)
Combined

**MEDIUM
LENGTH HAIR**
3 - 4 oz.
(90-120ml)
Combined

**LONG
HAIR**
4 - 6 oz.
(120-180ml)
Combined

3 APPLY

Apply solution to ¼” to ½” (1 to 1.5cm) sub sections, ¼” (1cm) off roots.
SATURATE THE HAIR
like color and comb straight.

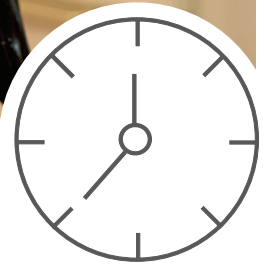
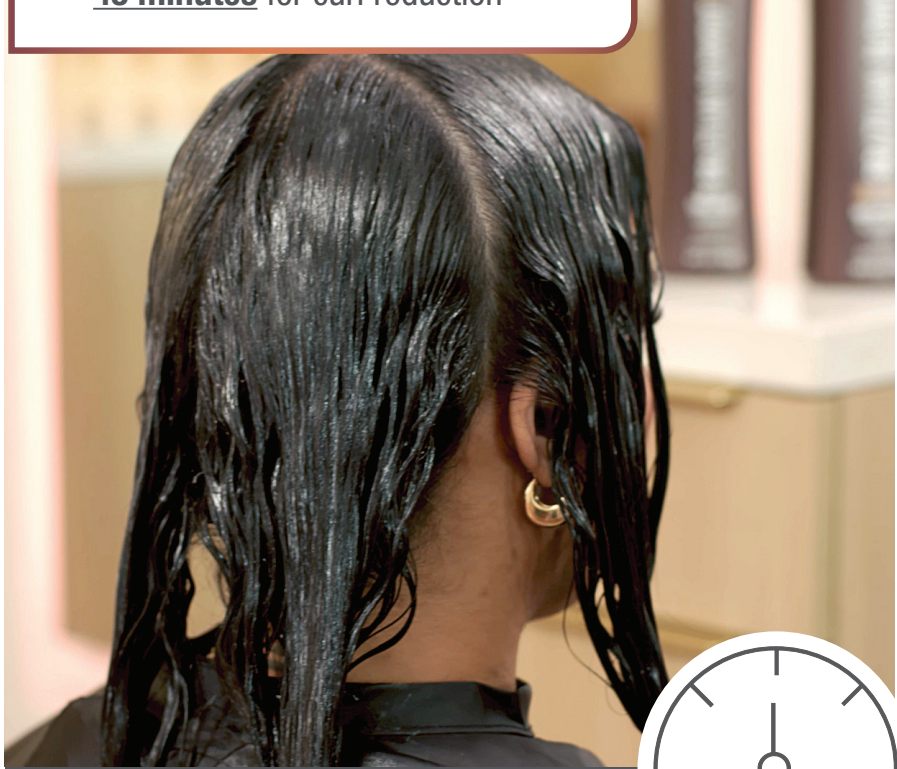


Must wear gloves

IMPORTANT: Do not excessively comb the hair again after applying.
IMPORTANT: For hair with different integrities, apply to resistant hair first and weaker hair last. Hair with overly **compromised ends, LEAVE OUT.**

4 PROCESS

Process in open air. Leave hair straight. Do not clip. Do not use heat.
• **30 minutes** to defrizz
• **45 minutes** for curl reduction



5 RINSE & CLEANSE



Rinse hair with **HOT WATER** for **3 MINUTES**.

Cleanse 2-3 times with **Micro Chelating Cleanser**. Scrub hair **vigorously**—roots to ends.



IMPORTANT: Rinse and cleanse as directed to remove **ALL** solution from the hair.

6 LAMINATE - STEP 1

Must wear gloves



FINALIZING LAMINATOR
Fragile Compromised

Towel dry hair. Apply 2 oz (60ml) of **Fragile/Compromised Laminator** on large sections, ¼” (1cm) off scalp to ends. **SATURATE THE HAIR.**



PROCESS:
• 5 minutes
Rinse after processing.

7 LAMINATE - STEP 2

Must wear gloves

FINALIZING LAMINATOR
Coarse Healthier

BRAZILIAN BLOWOUT FREE

FINALIZING LAMINATOR
FINALISER LAMINAGE
Coarse Healthier

24 fl. oz e 710ml

Towel dry hair. Lightly dust 1 oz (30ml) **Coarse/Healthier Laminator** on large sections.
DO NOT RINSE.

8 BLOW DRY & FLAT IRON

BLOW DRY
Blow dry using **high heat and strong tension** and a metal or ceramic round brush to get the hair as smooth as possible.

FLAT IRON
TEMPERATURE:
• 400–450°F (200–230°C)

SECTION SIZE:
• ½” to 1½” (1.5cm to 4cm)
Use smaller sections if needed.

PASSES:
• 8 passes to maintain curl
• 12 passes for sleekest results

After flat ironing, the service is complete. There is no wait period. Client can exercise, put hair in a clip, etc.

FRAGILE/COMPROMISED HAIR* INSTRUCTIONS



INCLUDES: Double-processed, heavily highlighted, balayage, fine/thin, dry, curly/wavy, frizzy, weaker hair.

*If the client's hair is too weak for another bleaching or highlighting process, we do not recommend performing this treatment. Once the hair is stronger and can withstand a lightening service, proceed with the Fragile/Compromised instructions.

1 CLEANSE & PREP



Spray **Micro Chelating Cleanser** generously on soaking wet hair & scalp. Massage until foamy. Rinse thoroughly. Repeat if necessary.



TOWEL DRY hair to 50% dry. Then divide hair into 4 sections. Thoroughly brush hair before application.

2 MEASURE & MIX



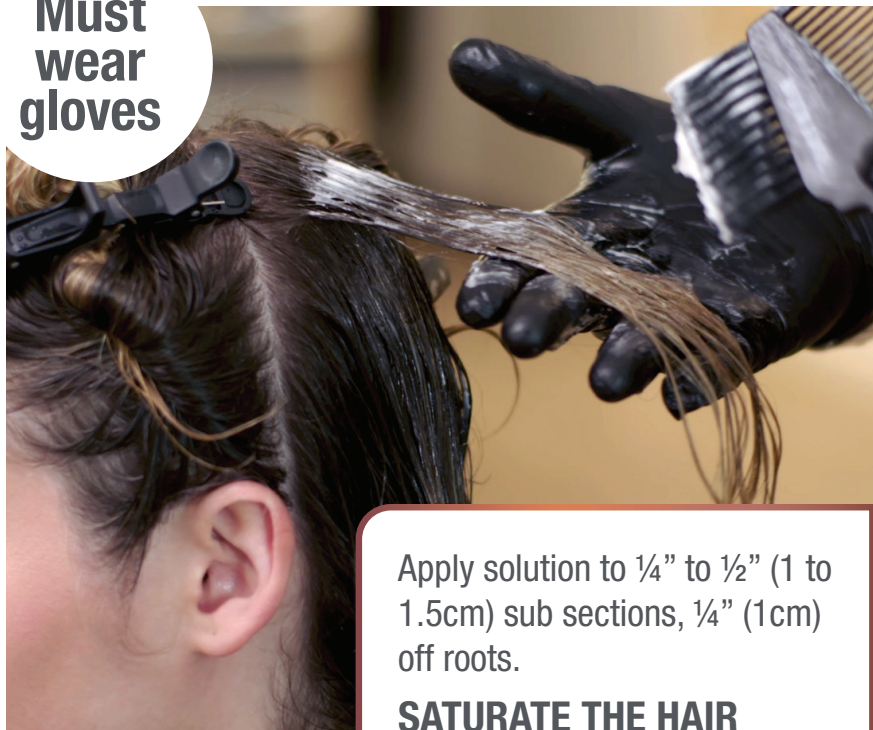
MIXING RATIO [1:1]
 50% **Smoothing Base** + 50% **Smoothing Activator**

MEASURE:

SHORT HAIR	MEDIUM LENGTH HAIR	LONG HAIR
2 - 3 oz. (60-90ml) Combined	3 - 4 oz. (90-120ml) Combined	4 - 6 oz. (120-180ml) Combined

3 APPLY

Must wear gloves



Apply solution to ¼" to ½" (1 to 1.5cm) sub sections, ¼" (1cm) off roots.

SATURATE THE HAIR

like color and comb straight.

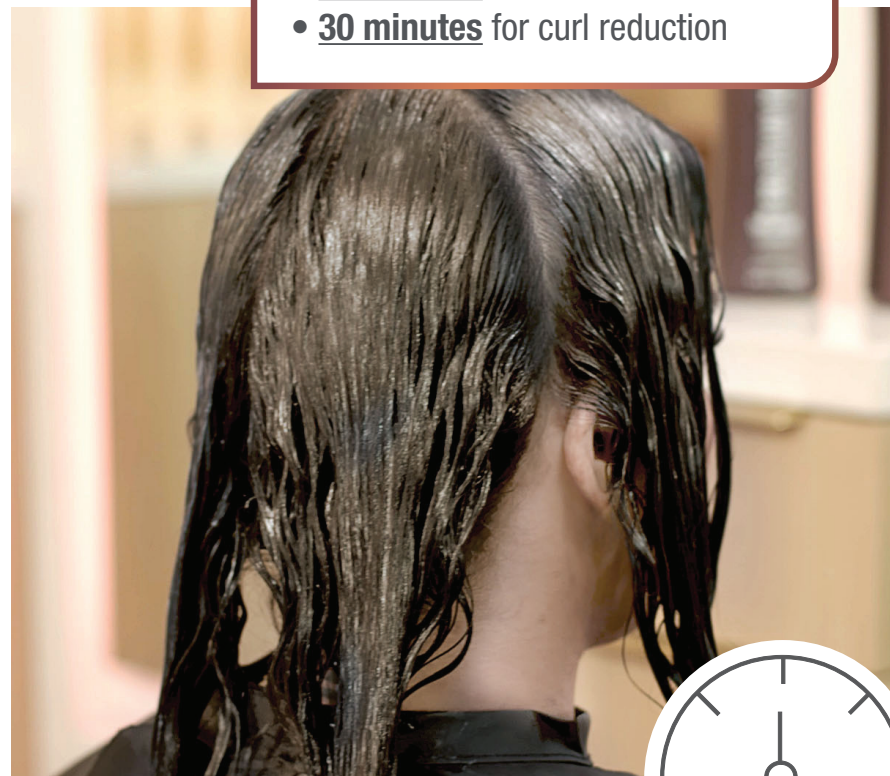
IMPORTANT: Do not excessively comb the hair again after applying.

IMPORTANT: For hair with different integrities, **apply to resistant hair first and weaker hair last.** Hair with overly **compromised ends, LEAVE OUT.**

4 PROCESS

Process in open air. Leave hair straight. Do not clip. Do not use heat.

- **20 minutes** to defrizz
- **30 minutes** for curl reduction



IMPORTANT: Test elasticity of the hair **periodically.** If the hair shows signs of excessive elasticity, rinse. Otherwise let hair process up to 30 min.

5 RINSE & CLEANSE



Rinse hair with **HOT WATER** for **3 MINUTES**.

Cleanse 2-3 times with **Micro Chelating Cleanser**. Scrub hair **vigorously**—roots to ends.



IMPORTANT: Rinse and cleanse as directed to remove **ALL** solution from the hair.

6 LAMINATE - STEP 1



FINALIZING LAMINATOR
Fragile Compromised

Must wear gloves

Towel dry hair. Apply 2 oz (60ml) of **Fragile/Compromised Laminator** on large sections, ¼” (1cm) off scalp to ends. **SATURATE THE HAIR.**



PROCESS:
• 20 minutes
Rinse after processing.

7 LAMINATE - STEP 2

Must wear gloves



FINALIZING
LAMINATOR

Coarse
Healthier

Towel dry hair. Lightly dust 1 oz (30ml) **Coarse/Healthier Laminator** on large sections.

DO NOT RINSE.

8 BLOW DRY & FLAT IRON

BLOW DRY

Blow dry using **high heat and strong tension** and a metal or ceramic round brush to get the hair as smooth as possible.



FLAT IRON

TEMPERATURE:

- 380–410°F (190–210°C)

SECTION SIZE:

- ½" to 1½" (1.5cm to 4cm)
Use smaller sections if needed.

PASSES:

- 6 passes to maintain curl
- 8 passes for sleekest results



After flat ironing, the service is complete. There is no wait period. Client can exercise, put hair in a clip, etc.

MAINTENANCE

- **Brazilian Blowout Deep Conditioning Masque**
Use for first 3-4 washes



- **Brazilian Blowout Ionic Bonding Spray**
Prolongs Treatment



- **Brazilian Blowout Anti-Frizz Shampoo & Conditioner**
Prolongs Treatment





STYLIST SUPPORT

We are committed to your continued success, offering **FREE live virtual training** with a Brazilian Blowout Global Trainer. Get the latest pro tips, sharpen your skills, and have your questions answered in real time.

Scan the code to browse and book your training.

BRAZILIAN BLOWOUT FREE



[brazilianblowout](#)



[@brazilianblowout](#)



[@brazilianblowout1](#)

[brazilianblowout.com](#) 1.877.779.7706

The Brazilian Blowout FREE Smoothing Treatment must be performed by a certified licensed stylist only and must be used in accordance to manufacturer instructions.