



### DEFINING PASTE

Medium hold and low shine

**Product Details:** Adds definition and provides a loose and textured finish. Easy to distribute through hair.

**Available Size:** 3oz/85g



### FIBER

High hold and low shine

**Product Details:** Provides texture with added thickness and a matte finish. Works well for short, choppy cuts.

**Available Sizes:** 3oz/85g



### WHIP

Light hold and natural shine

**Product Details:** An airy, weight-less whipped formulation that provides subtle texture & control for a natural, effortless look.

**Available Size:** 3oz/85g



### FORMING CREAM

Medium hold and medium shine

**Product Details:** Easy to use styling cream Provides excellent pliability to create wave separation or curl definition.

**Available Sizes:** 3oz/85g



### POMADE

Medium hold and high shine

**Product Details:** Water-based pomade controls highly texture curls and creates classic slicked back looks. Provides a modern, flexible alternative to styling gels.

**Available Sizes:** 3oz/85g



### FIBER CREAM

Medium hold styling cream

**Product Details:** A styling cream that combines flexibility with control, gives hair refined texture and a natural shine finish.

**Available size:** 3.3oz/100mL



### FIRM HOLD STYLING GEL

Firm hold, non-flaking gel.

**Product Details:** High hold styling gel with alcohol-free formula helps hair look thicker and added shine. Low pH prevents drying of the hair and scalp.

**Available Sizes:** 8.45oz/250mL



### LIGHT HOLD STYLING GEL

Light hold, non-flaking gel.

**Product Details:** Alcohol-free formula contains thermal barriers to protect hair from blow drying. This is one gel that works to condition scalp with ginseng and sage extract.

**Available Sizes:** 8.45oz/250mL,



### MATTE CLAY SPRAY

Oil-absorbing medium hold matte texturizing spray

**Product Details:** Texturizing spray that gives you strong, medium hold that lasts all day long. Formulated with Kaolin Clay, this spray gives major texture and body to the hair.

**Available size:** 5.1oz./150mL



### 3-IN-1 CLASSIC

Shampoo, conditioner, and body wash with original fragrance

**Product Details:** Cleanses and washes away oil from the hair, scalp and body. Leaves hair conditioned and shiny and the skin soft and smooth.

**Available Sizes:** 8.45oz/250mL, 33.8oz/1000mL



### 3-IN-1 TEA TREE

Shampoo, conditioner, and body wash with refreshing fragrance

**Product Details:** Cleanses and washes away oil from the hair, scalp and body while deodorizing and neutralizing odor. Leaves hair conditioned and shiny and the skin soft and smooth with a refreshing Tea Tree scent

**Available Sizes:** 8.45oz/250mL, 33.8oz/1000mL



### DAILY CLEANSING SHAMPOO

With invigorating naturally derived citrus mint fragrance.

**Product Details:** Cleanses the hair and scalp washing away impurities. Non drying formula leaves hair feeling soft and manageable. Formulated without silicones.

**Available sizes:** 8.45oz/250mL,

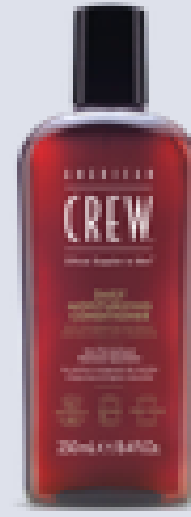


### DAILY DEEP MOISTURIZING SHAMPOO

With invigorating naturally derived citrus mint fragrance.

**Product Details:** Cleanses hair and scalp while infusing them with moisture for softness you feel all day long. Formulated without silicones.

**Available Sizes:** 8.45oz/250mL



### DAILY MOISTURIZING CONDITIONER

With invigorating naturally derived citrus mint fragrance.

**Product Details:** Ultra Moisturizing formula for softer hair you can feel all day long. Formulated without silicones.

**Available Sizes:** 8.45oz/250mL,



### BEARD BALM

Beard conditioner and styler.

**Product Details:** A soft balm that tames and conditions the beard with flexible application for styling.

**Available Size:** 2.1oz/60g



### BEARD SERUM

Conditioning beard oil.

**Product Details:** An oil-based formula specially designed for beard care, with beneficial oils that instantly condition and keep the beard soft and well groomed.

**Available Size:** 1.7oz/50mL



### ALL-IN-ONE FACE BALM

BROAD SPECTRUM SPF 15

Soothes just shaved skin. Daily moisturizer. Anti-aging.

**Product Details:** Aftershave balm for preventing irritation from shaving. Innovative ingredients fight the signs of aging and prevent ingrown hairs.

**Available Sizes:** 5.7oz/170mL



### LATHER SHAVE CREAM

Rich, lather shave cream

**Product Details:** Formulated with hydrating ingredients. Lather Shave Cream creates a rich, foamy lather that helps soften and lift the beard hair for an easy shave. The formula provides a glide that helps protect skin from irritation and razor burn, leaving the skin feeling smooth and looking polished.

**Available Size:** 8.45 oz/250ml



### MOISTURIZING SHAVE CREAM

Non-drying cream for a close shave.

**Product Details:** Moisturizing, non-foaming cream creates a protective barrier without drying the skin. Emollients provide maximum protection and conditioning for skin that requires extra moisture.

**Available Size:** 5.1oz/150mL



### PRECISION SHAVE GEL

Non-drying, transparent gel for a close shave

**Product Details:** Non-foaming gel designed for normal or thin beard types. Provides a definitive, quick and clean shave.

**Available Size:** 5.1oz/150mL,