

NOW LUXURY HAIR FROM START TO FINISH



Hot Like Me Haircare's lineup just grew to 5 Must have formulas!

ASK YOURSELF:

Why HOT LIKE ME, Why Now, & Why It Matters



CONSUMERS EXPECT MORE FROM HAIRCARE TODAY.

They want clean, conscious formulas that perform.

They want scalp health and hair health.

They want products that feel luxurious, smell Ah-mazing, and actually work.

Hot Like Me meets this moment by delivering skincare-level treatments for the scalp and hair that support confidence, joy, and long-term hair health.



BOTANICAL CULTURE SHAMPOO

For luxury, nutrient-rich cleansing

WHAT IT IS!

A luxurious plant-powered shampoo infused with nature's finest botanicals to nourish, strengthen and revive your hair experience. Pure hydration, vibrant shine, and a mood-boosting scent that smells ah-mazing

WHAT IT DOES!

- + Cleanses without stripping or drying out the hair
- + Supports scalp balance and long-term hair health
- + Leaves hair soft, shiny, and touchably clean
- + Safe for all hair types, color-treated hair, hair extensions, or human hair additions
- + Infused with Vitamin C for strength and shine

FOR BEST RESULTS USAGE INSTRUCTIONS :

- + Apply to damp palms of your hands →
- + Rub palms together vigorously for five to seven Seconds to release the botanical nutrients that Start the formation of the non-sulfate lather
- + Apply to wet hair and massage into the scalp and hair using circular motions →
- + Let it sit for thirty to sixty seconds then rinse and then follow with Extreme Rescue Hair Mask conditioner.



NATURAL POWERFUL INGREDIENT



Argan Oil



Squalane



Vegetable Protein



Caffeine



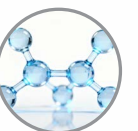
Nettle



Hyaluronic Acid



Biotin



Panthenol



Saw Palmetto,

10fl oz / 296ml
MADE IN THE USA





EXTREME RESCUE HAIR MASK

For deep repair and intensive nourishment

WHAT IT IS!

A rich, high-performance treatment mask infused with nutrient-dense oils and botanicals to restore strength, softness, and resilience to stressed or damaged hair. Designed to deeply nourish while leaving hair silky, manageable, and visibly healthier.

WHAT IT DOES!

- + Deeply nourishes and repairs damaged hair
- + Strengthens and improves elasticity
- + Restores softness, smoothness, and shine
- + Helps protect hair from environmental stress
- + Safe for all hair types, color-treated hair, hair extensions, or human hair additions

FOR BEST RESULTS USAGE INSTRUCTIONS :

- + Apply generously to clean, damp hair
- + Distribute evenly from mid-lengths to ends
- + Leave on for three to five minutes, or longer for deeper conditioning
- + Rinse thoroughly and style as desired
- + Use weekly or as needed for intensive repair



NATURAL POWERFUL INGREDIENT



Caffeine



Moringa Oleifera Oil



Rosemary Leaf Oil



Avocado Oil



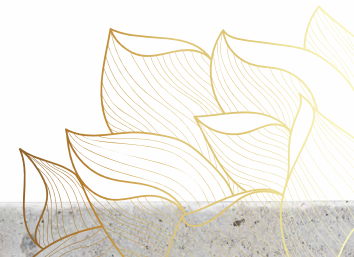
Jojoba Oil



Passiflora Edulis Seed Oil



Mauritia Flexuosa Oil





SHEER GLASS COAT

For weightless, glass-like shine

WHAT IT IS!

A sheer, ultra-light finishing treatment designed to deliver mirror-like shine, smooth the hair surface, and seal in moisture without weight or buildup. The final step for polished, reflective hair with a silky feel and a mood-boosting scent that smells ah-mazing.

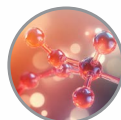
WHAT IT DOES!

- + Delivers high-gloss, glass-like shine
- + Smooths the cuticle for a polished finish
- + Helps protect against humidity and frizz
- + Seals in moisture without weighing hair down
- + Safe for all hair types, color-treated hair, hair extensions, or human hair additions

FOR BEST RESULTS USAGE INSTRUCTIONS :

- + Sheer Glass Coat requires heat and tension to activate its frizz-fighting formula and deliver a sleek, smooth, humidity-proof finish that lasts.
- + Towel-dry hair thoroughly, then divide hair into even sections.
- + Spray a liberal amount of Sheer Glass Coat onto damp hair (not soaking wet).
- + Comb through from roots to ends to ensure even distribution.
- + Blow-dry each section using a brush to create tension while directing heat from the dryer set to a medium-to-high temperature.
- + Continue drying until each section is completely dry for maximum shine and smoothness.

NATURAL POWERFUL INGREDIENT



Tetrahexyldecyl
Ascorbate



Squalane



Ceramide
NG



Sodium
Hyaluronate



Polysilicone-29



Argania Spinosa
Kernal Oil



HOT
LIKE
ME

HAIR CARE®

Beaute' With Attitude

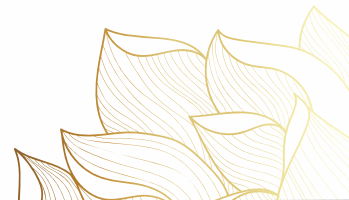
SHEER GLASS COAT

DUAL ACTION SPRAY

combines intense shine with advanced heat protection for smooth frizz free perfection

6.76 fl oz / 200ml

MADE IN THE USA





NUTRITIOUS GLOW LEAVE-IN

For lightweight hydration and healthy shine

WHAT IT IS!

A multi-tasking, lightweight leave-in treatment that hydrates, strengthens, and enhances natural shine while improving manageability. Designed for daily use to support long-term hair health without heaviness.

WHAT IT DOES!

- + Provides lightweight hydration without buildup
- + Helps detangle and improve manageability
- + Strengthens hair and supports overall hair health
- + Enhances natural shine and softness
- + Safe for all hair types, color-treated hair, hair extensions, or human hair additions

NATURAL POWERFUL INGREDIENT



Amaranthus Caudatus



Rosemary Leaf Oil



Jojoba Oil



Avocado Oil



Hydrolyzed Quinoa



Argania Spinosa Kernal Oil

FOR BEST RESULTS USAGE INSTRUCTIONS :

- + Apply a small amount to clean, damp hair
- + Work evenly through mid-lengths and ends
- + Do not rinse
- + Style as desired
- + Can also be used on dry hair to refresh shine and smooth flyaways





DE-FRIZZING SERUM

For Sleek Polished Perfection

WHAT IT IS!

Lightweight. Silky. Transformative. Meet De/Frizz Smoothing Serum.. Frizz doesn't stand a chance. Your secret to silky, polished, humidity-resistant hair—finished with a mood-boosting scent that smells ah-mazing. Lightweight. Powerful. Addictive.

WHAT IT DOES!

- + Instantly smooths frizz and flyaways
- + Boosts natural shine and softness
- + Helps protect against humidity and dryness
- + Leaves hair polished, not greasy

FOR BEST RESULTS USAGE INSTRUCTIONS :

- + Apply one or two pumps into palms and apply to damp hair. →
- + Focus the application on mid-lengths to the ends of your hair. →
- + Use sparingly; this serum is powerful, so a little goes a long way.



Do not use near open flames or with high heat dryers or appliances. This is a beautiful natural oil and is meant for light finishing.



NATURAL POWERFUL INGREDIENT



Glycine Soja



Simmondsia Chinensis



Persea Gratissima



Beta-Carotene



Oryza Sativa



Daucus Carota Sativa



Tocopherol



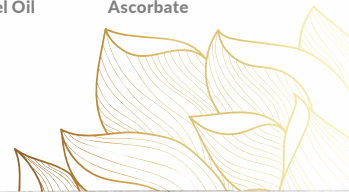
Rosmarinus Officinalis



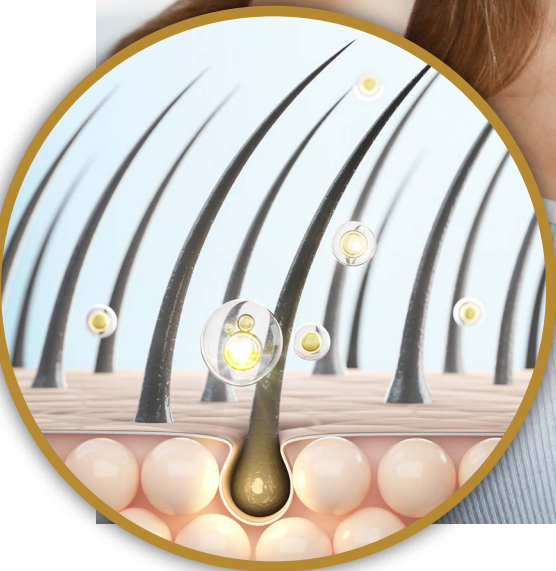
Argania Spinosa Kernel Oil



Tetrahexyldecyl Ascorbate



Skinification of haircare

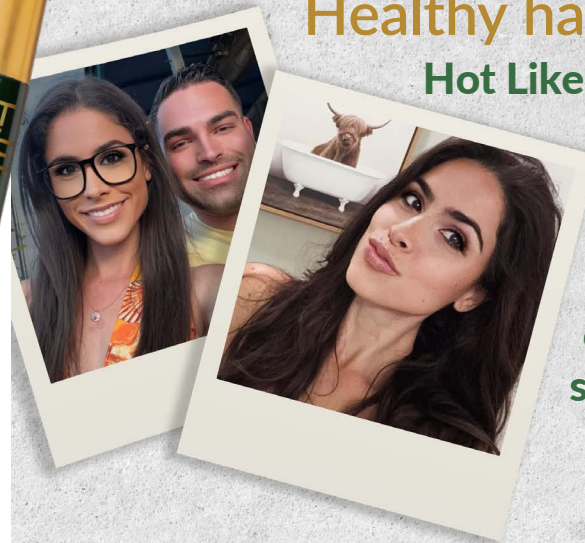


AI-Enhanced Haircare: The Science of Perfection



Healthy hair starts at the scalp.

Hot Like Me treats the scalp like skin by using skincare-inspired ingredients and technology to nourish, protect, and improve overall hair and scalp health.



Universal Beauty: Perfect for All Hair Types and Extensions

- + Works on straight, wavy, curly, and coily hair
- + Safe for human hair extensions and weaves
- + Designed for universal performance

CLEAN & CONSCIOUS STANDARDS

- + Cruelty Free – Never tested on animals
- + Plant Based – Powered by botanicals
- + Paraben Free – Gentle, effective formulas
- + Sulfate Free – Clean cleansing and treatment
- + Color Safe – Safe for color and keratin-treated hair



A Scent of Confidence:
**MOOD BOOSTING
PROPRIETARY SCENT**

smells ah-mazing!!!



Hot Like Me Advantage Program

WHO CAN USE IT:

Account Executives (sales reps)
each chooses one salon at a time.

WHAT THE SALON RECEIVES FOR FREE:

- A full set of five (5) full-size Hot Like Me products for every stylist, including the receptionist.
- A back-bar leader of the shampoo
- A back-bar leader of the mask
- Visual, in-salon Hot Like Me dominance: stations lined with all 5 products + back-bar setup.

WHY:

To ensure stylists use the entire system for 2-4 weeks, creating immediate excitement and product demand.



Hot Like Me Advantage Program

WHAT HOT LIKE ME EXPECTS IN RETURN:

1. An opening order at time of drop-off

- Salon must purchase 4 of each of the 5 products (20 bottles total)
- Cost to salon is approx. \$291.60
- The value of free goods they receive is 3-4x that amount

2. Weekly reporting

- Each AE must report every Friday which salon was opened and whether the order came in.

3. Progression

- Once an AE successfully opens one salon with the program, they immediately earn the right to open another.
- For new distributors, each AE may start with up to five initial salons.

GOAL:

Create rapid, high-impact salon adoption and quick revenue instead of slow 30-day testing cycles.

